

Sharif & Munir Custom Homes acquires last available lot in Los Arboles

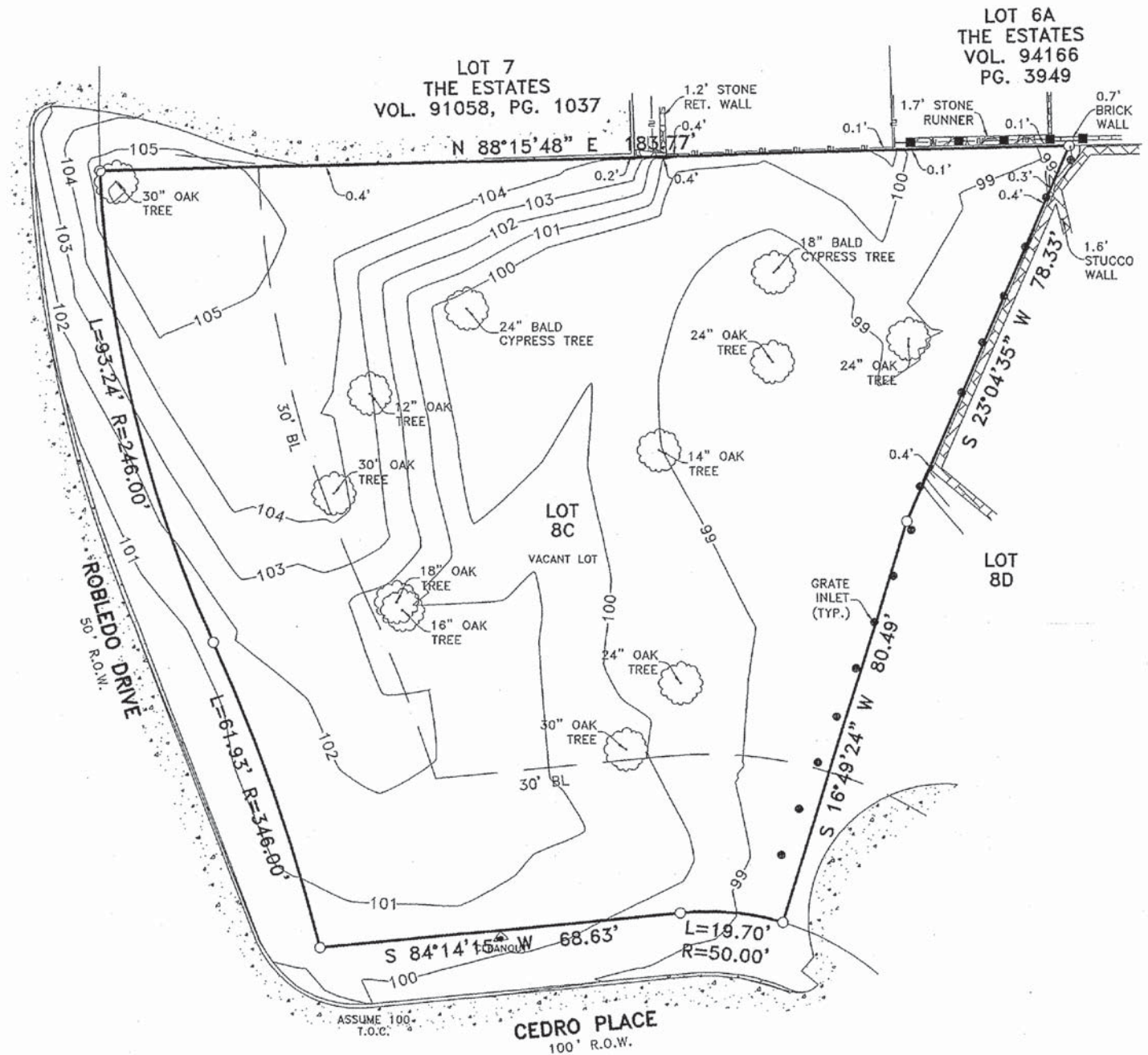
Approximately 1/2 acre with large trees in a gated and guarded estate community. Currently available for build-to-suit clients who want to take advantage of our 'Look Before You Leap' program.

For further information, Please call **972-788-1234** or visit our website at www.sharif-munir.com. Furnished open houses open daily.



See reverse for tree survey plat.

To view this property, Please call 972-788-1234



24 Robledo - \$950,000 Build to suit only -
Trapezoidal Shaped Corner Lot Size: .4633 acres,
Estates on Cedro Place, Lot 8C Blk 14/6378